

4

## Starting-up the Filter

The EKO+ system is supplied exclusively with cartridges of a filtering capacity equal to 600 liters. The system is already programmed to work with the cartridge's specific capacity so there is no need at all to set up the system.

The number 600 will appear on the digital display as soon as the water selection handle is set to "PURE WATER" (ultra-filtered water) and the faucet is turned on.

To prepare the filter for use:

- set the water selection handle to "STRAIGHT TAP WATER" (unfiltered water)
- turn the faucet on and run cold water for at least 10 seconds

- set the water selection handle to "SPRAY FLOW TAP WATER" (unfiltered water)
- run water for at least 10 seconds

-set the water selection handle to "PURE WATER" (ultra-filtered water)

The digital display will then turn on and indicate the amount of liters left to filter starting from 600. Once the display indicates 0, the filter cartridge must be replaced with a new one.

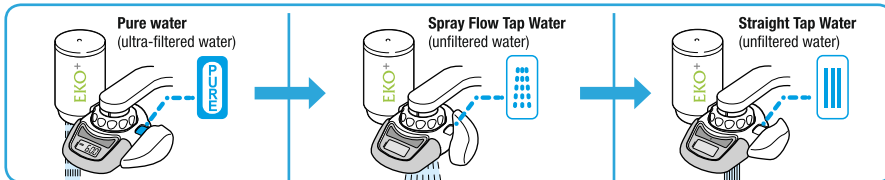
### Important

*Immediately after filter cartridge installation or replacement, run a slow stream of water through the filter cartridge for 60 seconds or at least 2 liters of water before drinking or using. Not doing so could cause air to become trapped inside the filter cartridge and reduce the water flow.*

5

## How to Use/Read the Digital Display

The practical handle allows you to choose from:



### How to read the digital display (digital display appears only when using the filtered water)

Digital display shows the available filtering capacity in liter units.



The digital display turns on only while using filtered water or when the battery needs to be changed.

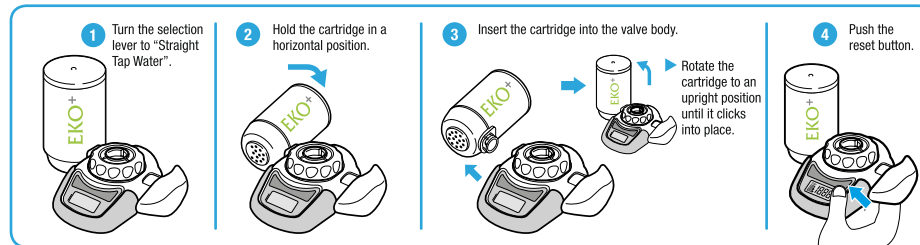
#### Battery replacement time

When the digital display time exceeds a certain period of time (about one year for general frequency use), (a standard mark for battery replacement) blinks at the upper left of the digital display.

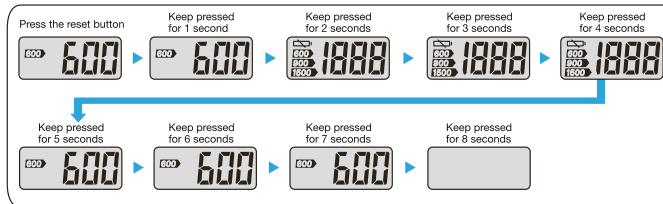
6

## Replacing the Filter Cartridge

Don't forget to turn off your faucet and set the water selection lever to "Straight Tap Water" before removing the filter cartridge.



Examples of the digital displays when you push the reset button (When replacing a cartridge)



Each time you replace your cartridge, turn off your faucet and set the water selection handle to "STRAIGHT TAP WATER" (unfiltered) before removing the filter cartridge. Install the new cartridge following steps 3 and 4 above.

### CAUTION!

Be sure to press the reset button when installing or replacing the cartridge.

Immediately after filter cartridge replacement, run a slow stream of water through the filter cartridge for 60 seconds before drinking or using. Not doing so will cause air to become trapped inside the filter cartridge and reduce water flow.

After water starts running through the filter cartridge, it is no longer possible to reset the cartridge type setting.

## SETTING CARTRIDGE Type

ONLY UNDER A SPECIALIZED TECHNICIAN OF EKO SRL

- Press the cartridge type set button.
- The digital display will flash for a few seconds, indicating the available filtering capacity.

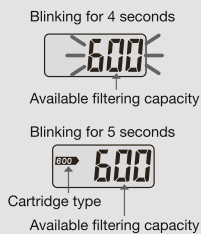


The digital display shows the cartridge type used (600L).

- After flashing for 4 seconds, the cartridge type is selected. The digital display will show the cartridge type used and the available filtering capacity for another 5 seconds, then the setting is completed. The light turns off after completion.

### When replacing the cartridge

- While pressing the cartridge type, set button during the flashing of the available filtering capacity, the display of the available filtering capacity is switched to 600 ▶ 900 ▶ 1500 ▶ 600. The cartridge type changes each time it's pressed.
- The cartridge type is selected after flashing for 4 seconds and the indication of the cartridge type and available filtering capacity light will be on for 5 seconds, then the setting is completed. The light turns off after completion.



The cartridge type is selected from the moment the reset button is pressed and the filtering capacity display light starts flashing.

### \* INFORMATION

The EKO+ system is designed to be reset on the digital display with filter cartridges of a filtering capacity equal to 600 liters. If during the replacement of the cartridge, the "SETTING CARTRIDGE" option is accidentally selected, follow the instructions written above to reset the equipment correctly. For any further needs, contact EKO SRL or an authorized retailer in the area.

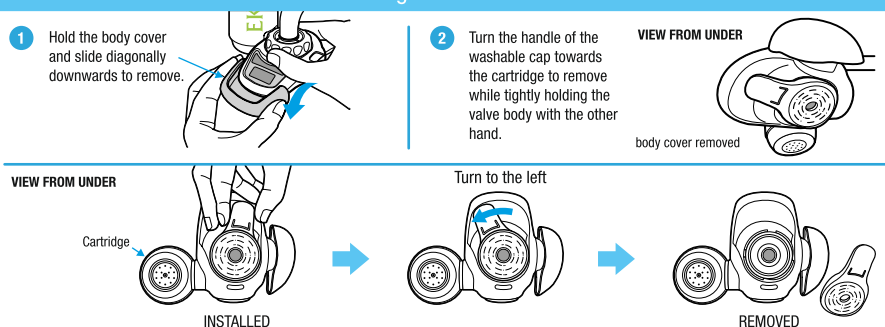
7

## Maintenance: Body cover and Washable cap

Cleaning is recommended once a week.

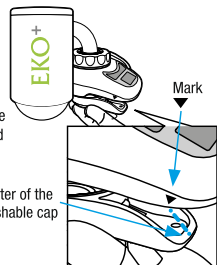
### How to remove / install the body cover and the washable cap

How to remove - Do not run water during removal.



How to install

Set ▼ mark on the side of the valve body and the center of the washable cap. Then install the washable cap in the reverse order of removal. Turn the washable cap to the position mentioned above until it goes into place.



### CAUTION!

Be careful not to leave small objects between the washable cap and the unit.

How to wash the body cover and the washable cap

- Set the water selection lever to "STRAIGHT TAP WATER" before washing. DO NOT set the position of "SPRAY FLOW TAP WATER".
- While cleaning the body cover, rinse it out with water or use a soft sponge.
- Use a clean toothbrush to clean the filtered water outlet and rinse off any contamination under running tap water.
- Wipe well with a clean cloth and install it.

### CAUTION!

DO NOT use the dishwasher or dish dryer. DO NOT use detergent, thinner or alcohol.

8a

## Cartridge



The cartridge must be replaced immediately:

- When the display device indicates 0
- When the flow of the water through the cartridge is too reduced to allow the ignition of the device's display
- When 6 months have passed since installation

The procedures of the cartridge replacement are indicated in **PART 6 - REPLACEMENT OF THE CARTRIDGE**

For a correct use of the device, it is necessary to clean the inferior part of the cartridge (through which water is delivered) with a slightly moist, sterile cloth, at least once a week. After having cleansed the cartridge, run at least 1 liter of water before using or drinking.

Do not remove the cartridge during the cleansing process of the cartridge.

Do not run water during the cleansing process of the cartridge.

8b

## Battery



The battery must be replaced when the flashing symbol of the battery appears on the device's display. To remove the battery, open the battery cover with a coin. Insert the coin in the gap of the battery cover and rotate in the direction of the arrow to **OPEN**. Remove the old battery and insert the new one. To install the new battery follow the instructions indicated in the paragraph **PART 1 - INSERTING THE BATTERY**.

EKO

EKO SRL - via Caduti del Lavoro, 19 - 43043 Borgo Val di Taro (Parma) - Italy - Tel. 0525.1861635 - info@ekosrl.it - www.ekosrl.it

EKO+

Water treatment system for domestic use

### Safety Precautions

Use water which meets drinking water quality standards only. Use the water purifier only with cold water. At first, and after every cartridge replacement, run at least 2 liters of water before drinking to avoid air getting trapped in the filter cartridge. Before each time you draw water to drink, run water under "Pure Water" mode for at least 5 seconds. Run water under "Pure Water" mode for 10 seconds before using or drinking to keep the outlet clean if you use the unit daily. Run at least 1 liter of water under "Pure Water" mode or for 60 seconds before using or drinking if the water filter remains unused for 1 or more days. Do not store filtered water. Pour water in washable glasses or jars to drink immediately or within, max., a few hours. Before being introduced into the market, the equipment passed very strict tests, therefore a meaningful decrease of the capacity flow of the filtered water before 300 liters are delivered is caused exclusively by the bad quality of tap water that passes through the equipment and therefore is not imputable to the efficiency of the product EKO+.

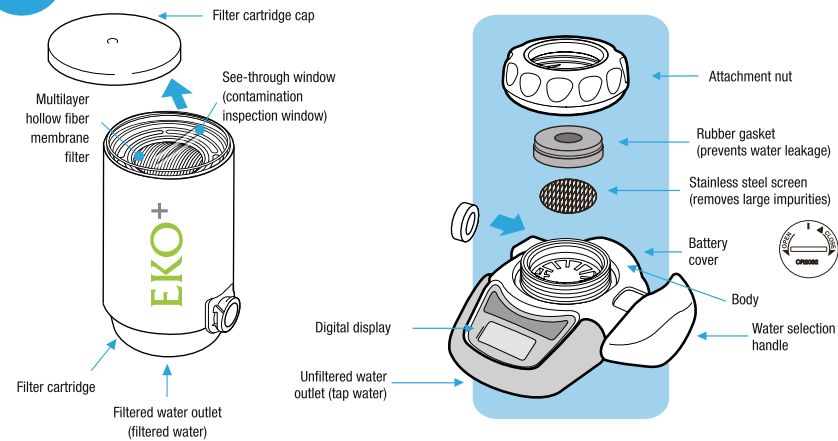
Torrential rains and maintenance of the water net or hydraulic system of your building can worsen the quality of feed water for the equipment and cause a fast occlusion of the filter cartridge leaking with the consequent reduction of the filtered water flow. Tests have been carried out on the equipment considering the standard limit of drinking tap water in Italy (local exceptions excluded) and therefore EKO SRL guarantees a correct functionality only under normal conditions.

Therefore, EKO SRL does not apply a replacement warranty on the filter cartridge based alone on the customer's demand. A replacement warranty may be applied only after having assessed the nature of the problem through an analysis in presence of the customer.

If any functional problem presents itself, contact a retailer or take the water filter to an authorized EKO sales point in the area. The warranty will expire automatically if any type of operation is not performed according to the official instructions of the equipment.

0

## Parts Included



### Digital display / Reset button / Cartridge type set button

#### Cartridge type set button

After resetting with reset button, set the cartridge type (replacing type 600L).

The indicator flashes when battery replacement is necessary.

Cartridge type indication (600L)

#### Digital indication

Digital display appears only when using filtered water.

Available filtering capacity

#### Reset button

Keep pressed for about 2 seconds when installing and replacing a cartridge.

Remaining purified water is shown in liters.

600

### Caution!

Before installing the filter, be sure to wash your hands thoroughly. Desinfect your faucet spout with a clean wet cloth.

1

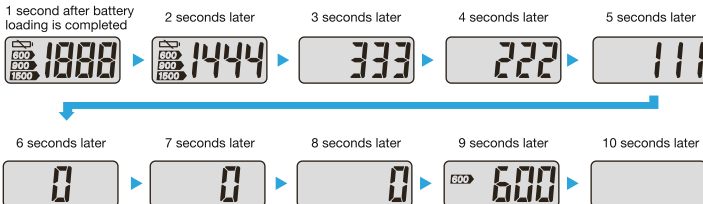
## Inserting the battery

### CAUTION!

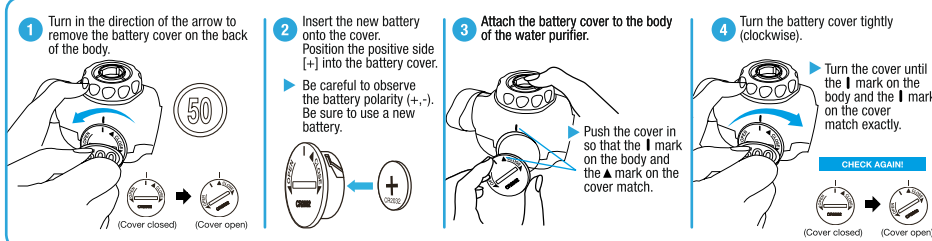
- Do not install the battery with wet hands.
  - Do not install or remove the battery if the water purifier is attached to the faucet.
- Before replacing the battery, remove the water purifier from the faucet and place it in a dry place.

**How to insert the battery** Use a commercially available button-type lithium cell CR2032 (3V).

### Digital displays after battery loading is completed



Please follow the same procedure for replacement.



2

## Choosing the Correct Adapter

Be sure to identify the faucet type correctly - by confirming spout shape, diameter and screw thread width - before choosing the proper adapter.

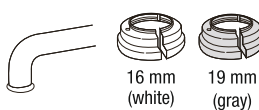
SPOUT SHAPES			
16 mm 19 mm	22 mm exterior screw thread	15 mm or more	Below 25 mm in diameter
<b>A-type</b> Faucets with round spouts with rims.	<b>B-type</b> Aerated faucets (exterior screw threads)	<b>C-type</b> Aerated faucets (interior screw threads)	<b>WARNING</b> If none of the present adapters adjusts to your tap, contact EKO SRL or the zone retailer (visit our website <a href="http://www.ekosrl.it">www.ekosrl.it</a> )
16 mm (white) 19 mm (gray)	White Gray	Blue	

3a

## Attaching the Adapter - A type

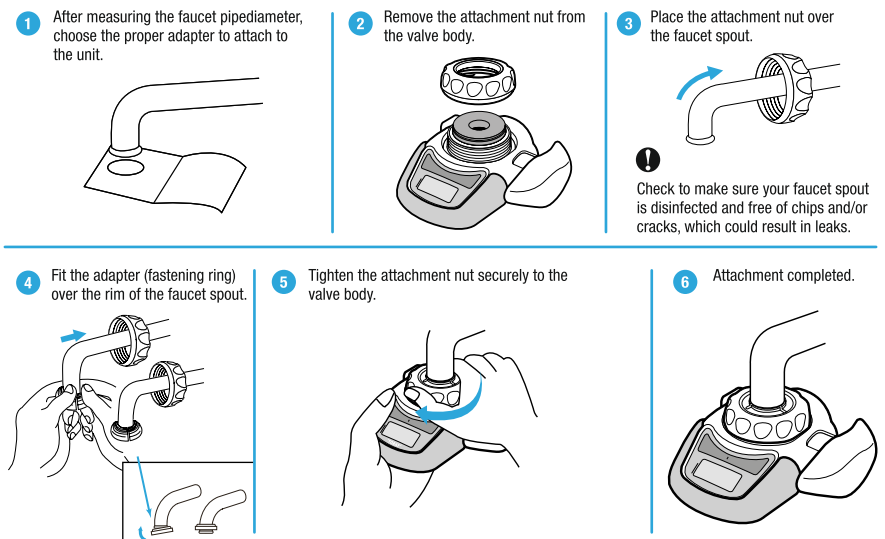
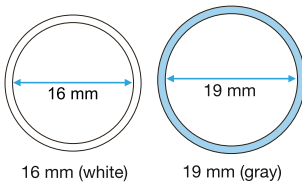
Be sure to correctly identify the faucet type - by confirming spout shape, diameter, and screw thread width - before choosing the proper adapter.

### A Type



#### Actual pipe diameter

To measure pipe diameter hold the diagram on the right against the spout of your faucet.

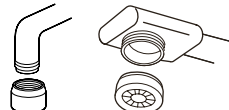


3b

## Attaching the Adapter - B type

Be sure to correctly identify the faucet type - by confirming spout shape, diameter, and screw thread width - before choosing the proper adapter.

### B Type

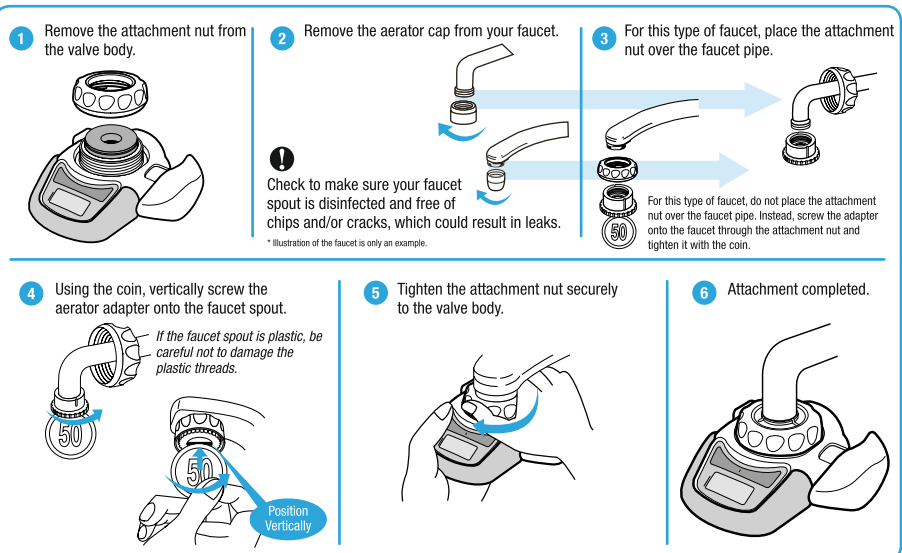


White

Gray



Use a coin.

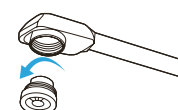


3c

## Attaching the Adapter - C type

Be sure to correctly identify the faucet type - by confirming spout shape, diameter, and screw thread width - before choosing the proper adapter.

### C Type



Blue



Use a coin.

